

# COVID-19: Making Sets Safer

## What We Do

At TAG Supplies we bring **a number of COVID-19 related services under one roof**. Our goal is to simplify this new set of challenges for production companies and to help get our industry up and running.

Working closely with medical health professionals, PPE suppliers, sanitisation companies and a whole host of others, the services we provide are specifically designed to mitigate the risks related to COVID-19 and to make sets as safe as possible. We are also liaising with governing bodies across the film and television industry to tailor our services in line with the latest protocols, qualifications and working practises.

## Our Services

### Personnel

- Health & Safety Advisers + Risk Assessments
- COVID Supervisors & Assistants
- COVID Medical Officers

### Hygiene & PPE

- Sanitisation Stations & anti-bacterial scrub points
- 3-Ply Masks, Nitrile Gloves

*\*We can provide more specialised PPE on request*

### Cleaning & Decontamination

- Anti-Viral Fogging
- Manual Decontamination / Cleaning
- Regular & Clinical Waste Removal

### Catering

- Location catering by Tart London (compliant with guidelines)

### Studio & Location

- TAG Studios (8,000sq ft, Central London, SW1)
- Marquees (safety distancing, dining & location partitioning)

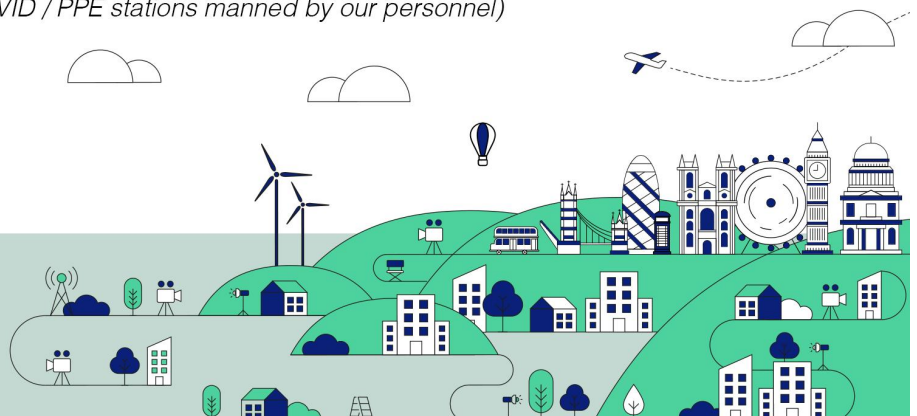
*\*Both pre-configured and tailored for social distancing and meeting safety guidelines*

### Equipment

- Chapter 8 Barriers (for safety distancing)
- EZups, tables, chairs etc *(for COVID / PPE stations manned by our personnel)*

### Contact:

info@tagsupplies.com  
www.tagsupplies.com



## Services (1/2)

### Personnel

#### **H&S Adviser + Risk Assessment - £550/day\*** *(based on 10hr day, exc travel)*

Our qualified Health & Safety Advisers will attend Tech Recces and draw up a bespoke Risk Assessment for you in accordance with COVID-19 guidelines.

#### **COVID Supervisors (CS) - £400/day** *(based on 10hr day, exc travel)*

Our **COVID Supervisors** will monitor your shoot to make sure that crew and cast adhere to safety protocols and guidelines stipulated in the Risk Assessment, as well as over-arching guidance and best practises. They operate in conjunction with the Medical Officer to provide a proactive level of safety cover and reassurance for cast and crew.

*\*Additional CS's or **Assistants (£300/day)** may be required for large crews and multiple location shoots.*

#### **Medical Officer (MO) - £350/day** *(based on 10hr day, exc travel)*

A qualified, on-set **Medical Officer** will temperature check cast and crew three times daily (arrival, lunch, wrap) and isolate anyone who displays symptoms. The MO will regularly wipe down key 'touch-points' throughout the location, provide an on-going level of sanitisation and will also distribute PPE.

*\*Additional MOs may be required for large crews and multiple location shoots.*

### Hygiene & PPE

#### **Sanitation Station - £150/day**

These are a superb solution for film sets. They come pre-loaded with hand washing points, anti-bacterial dispensers and wipes and are maintained and replenished throughout the day by the Covid Supervisor.

#### **PPE - £POA**

We have a limited (but growing) stock of PPE and are in the process of rapidly expanding our range. Please enquire for more detail.

#### **Contact:**

info@tagsupplies.com  
www.tagsupplies.com



## Services (2/2)

### Cleaning / Decontamination

#### **Anti-Viral Fogging - £POA\*** *(based on size of location. Approx £125/1,000sq ft with minimum charge of £250)*

Fogging is the best treatment we have found to rapidly decontaminate locations of all sizes. We use a product called Zoono® which is a water based, non toxic, odourless, non-corrosive and alcohol-free. It is sprayed as an extremely fine mist to thoroughly decontaminate the location and enables rapid entry for cast and crew (10 minutes after spraying). *Please ask for more information.*

#### **Manual Cleaning Service - £30/hr**

We can provide manual cleaning services to disinfect locations and studio spaces on prep and strike days. Please note that this is not suitable as a permanent 'on-set duty'. (Please see our Medical Officer service).

#### **Clinical Waste Collection - £N/A** *(Included with Basic Essentials Package)*

All PPE must be treated as contaminated and disposed as such. In conjunction with our Medical Officers, we provide dedicated clinical waste bins along with responsible disposal.

### Catering

We can provide safe certified, location-catering services with our partners 'Tart London' ([www.tart-london.com](http://www.tart-london.com))  
*Please enquire for more information.*

### Studio, Location & Equipment

- TAG Studios. An 8,000sq ft studio space in SW1, pre-configured to meet H&S guidelines.  
*\*Lighting hire and catering services also available on-site.*
- Marquees for a variety of location needs and safety partitioning
- Safety Distancing Barriers (Chapter 8 Barriers)
- EZups, tables, chairs etc *(for COVID / PPE stations manned by our personnel)*
- Waste Collection (Sustainable and Responsible)
- Location equipment and essentials (see [www.tagsupplies.com](http://www.tagsupplies.com) for a list)

We recognise that every shoot is different, and with constantly changing guidelines it is difficult to know what you might need. We are here to help, and if you have any questions at all or would simply like to know more, please get in touch at: **[info@tagsupplies.com](mailto:info@tagsupplies.com)**

#### **Contact:**

[info@tagsupplies.com](mailto:info@tagsupplies.com)  
[www.tagsupplies.com](http://www.tagsupplies.com)

